

# THERE WILL NEVER BE ANOTHER YOU CHORD SCALES

**Staff 1:** Ebmaj7 (I), Eb IONIAN, Dm7(b5) (vii-7b5), G7 (V7/vi), G MIXOLYDIAN b9 b13.

**Staff 2:** Cm7 (vi-7), C AEOLIAN, Bbm7 (v-7), Bb DORIAN, Eb7 (V7/IV), Eb MIXOLYDIAN.

**Staff 3:** Abmaj7 (IV), Ab IONIAN, Db7 (bVII7), Db LYDIAN b7, Ebmaj7 (I), Cm7 (vi-7).

**Staff 4:** F7 (II7), F MIXOLYDIAN, Fm7 (ii-7), F DORIAN, Bb7 (V7), Bb MIXOLYDIAN.

**Staff 5:** Ebmaj7 (I), Dm7(b5) (vii-7b5), G7 (V7/vi).

**Staff 6:** Cm7 (vi-7), Bbm7 (v-7), Eb7 (V7/IV).

**Staff 7:** Abmaj7 (IV), Db7 (bVII7), Ebmaj7 (I), F#° (F# ALTERED DIMINISHED).

**Staff 8:** Gm7 (iii-7), D7 (V7/iii), Gm7 (iii-7), C7 (V7/ii), Fm7 (ii-7), Bb7 (V7), Ebmaj7 (I).

## MODES OF MAJOR SCALE

33 Cmaj7



IONIAN

35 Dm7



DORIAN

37 Em7(b9)



PHRYGIAN

39 Fmaj7(#11)



LYDIAN

41 G7



MIXOLYDIAN

43 Am7(b13)



AEOLIAN

45 Bm7(b5)



LOCRIAN

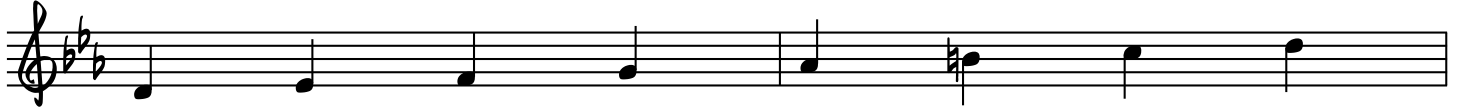
# MODES OF HARMONIC MINOR

47 Cm(maj7♭13)



HARMONIC MINOR

49 Dm13(♭5)



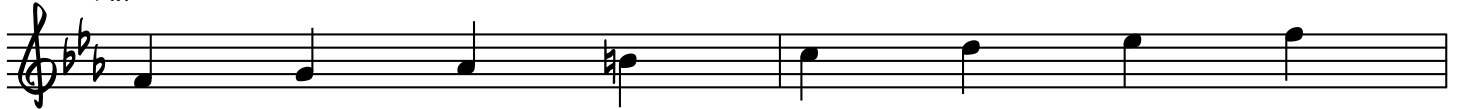
LOCRIAN NATURAL 6

51 Ebmaj7(♯5)



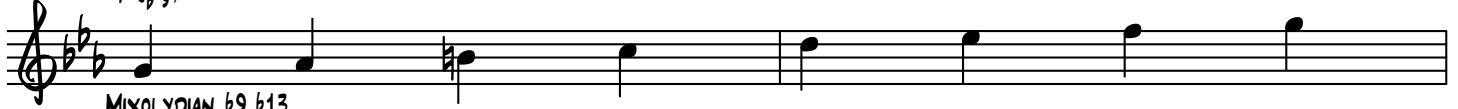
IONIAN #5

53 Fm13(♯11)



DORIAN #4

55 G7(♭13)



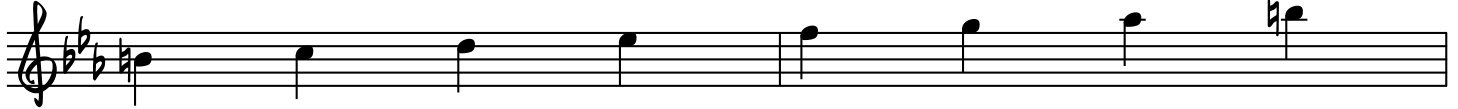
MIXOLYDIAN ♭9 ♭13

57 Abmaj7(♯11)



LYDIAN #2

59 B°



DIMINISHED ALTERED

4

# MODES OF MELODIC MINOR

61 Cm(maj7)



MELODIC MINOR

63 Dm13(b9)



PHRYGIAN NATURAL 13

65 Ebmaj7(#11)



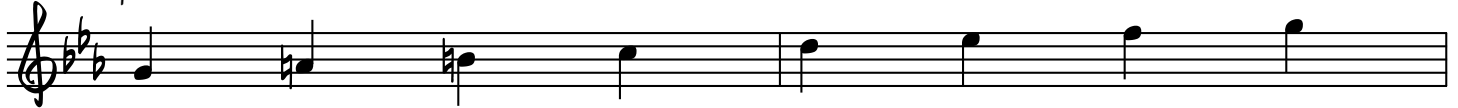
LYDIAN #5

67 F7(#11)



LYDIAN b7

69 G7(b13)



MIXOLYDIAN b13

71 Am9(b5)



LOCRIAN NATURAL 2

73 B7 ALT.



ALTERED (SUPER LOCRIAN)